



Lycée International de Londres

WINSTON CHURCHILL



Open Day

7 December 2019

Mireille Rabaté
Head of School
Proviseur







Des méthodes modernes Modern and engaging teaching methods

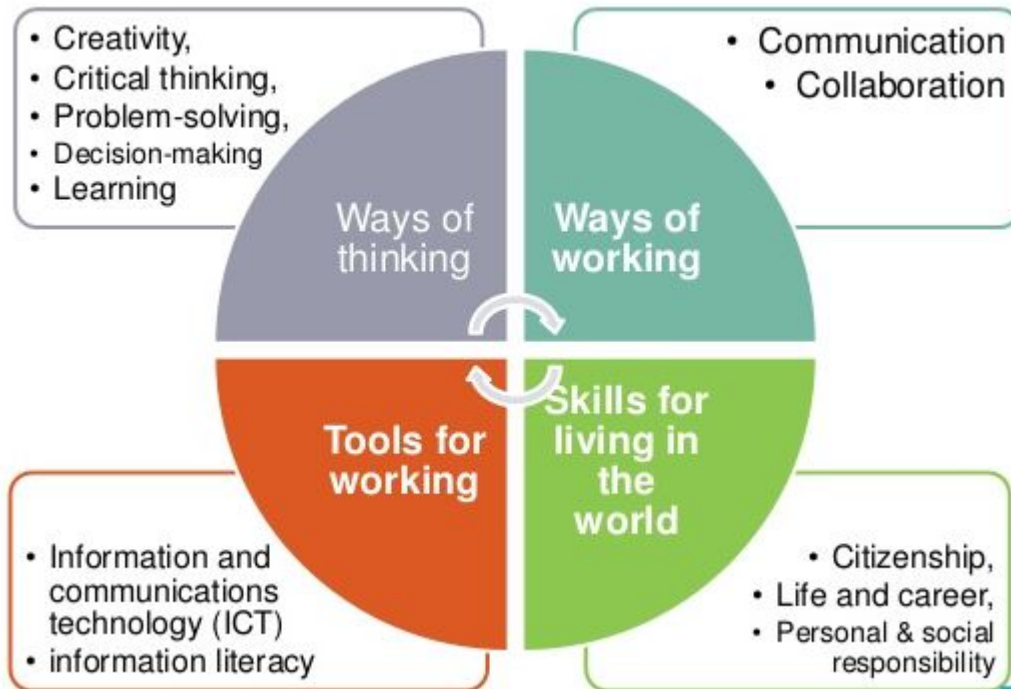


- Collaboration, créativité, différenciation
 - Collaboration, creativity and differentiation
- La technologie au service de la pédagogie
 - Technology to support teaching and learning



Apprendre pour le 21ème siècle

Learning for the 21st century



[source D.Marcial, PhD](#)



Excellence

Créativité

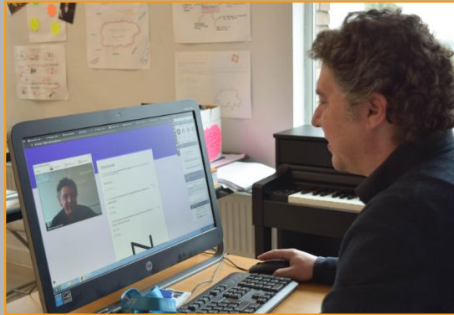
Intégrité

Solidarité

Ouverture



Pendant les examens During the exams ...



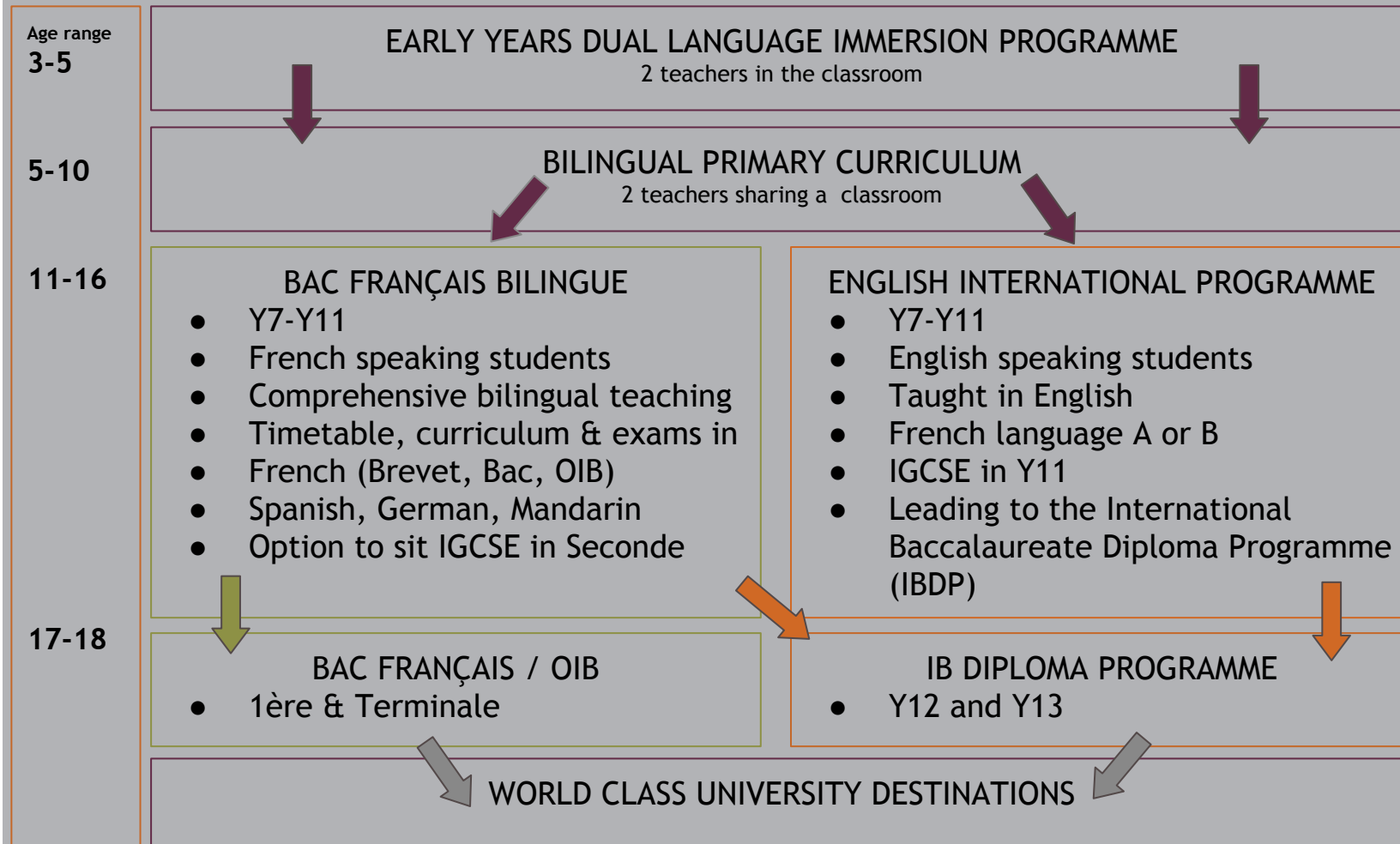
23 teachers, 9 virtual classes and 6 days of e-learning!

... les cours continuent à distance!
...learning continues remotely!

(Shortlisted for International Schools Awards 2020)



Une philosophie, deux cursus One Ethos, Two Programmes





Age 16 to 18: The IB Diploma Programme at LIL



- Internationally recognised Diploma
- Focus on skills
- Focus on concept- and inquiry-based learning
 - by experienced IB DP teachers
- 'The Core' - unique for the DP
 - Theory of Knowledge
 - Extended Essay
 - CAS
- Holistic
 - Breadth and depth
- Excellent university preparation

Students choose one course from each subject group.
Students choose 3 subjects at Higher Level (HL) and 3 at Standard Level (SL).



Suivi des résultats

Tracking and monitoring progress

- RESULTS AND NEEDS ANALYSIS
 - Report cards and results
 - Meeting with carers
 - Liaison with previous school
- OBJECTIVES, MEANS, SUPPORT
 - Contract between the school and the student
 - Individual commitments written by the student
 - Coordination LS + CTL + EP + VS + HoS
- THE STUDENT IS THE MASTER OF THEIR LEARNING
 - Blended learning
 - Individualisation of learning (time and resources)
 - Possibility to repeat/redo assessments
 - Checking progress in real time
 - PE cycle 2
 - Work plan and assessment



Confiance
Autonomie
Épanouissement



Des résultats exceptionnels Excellent results

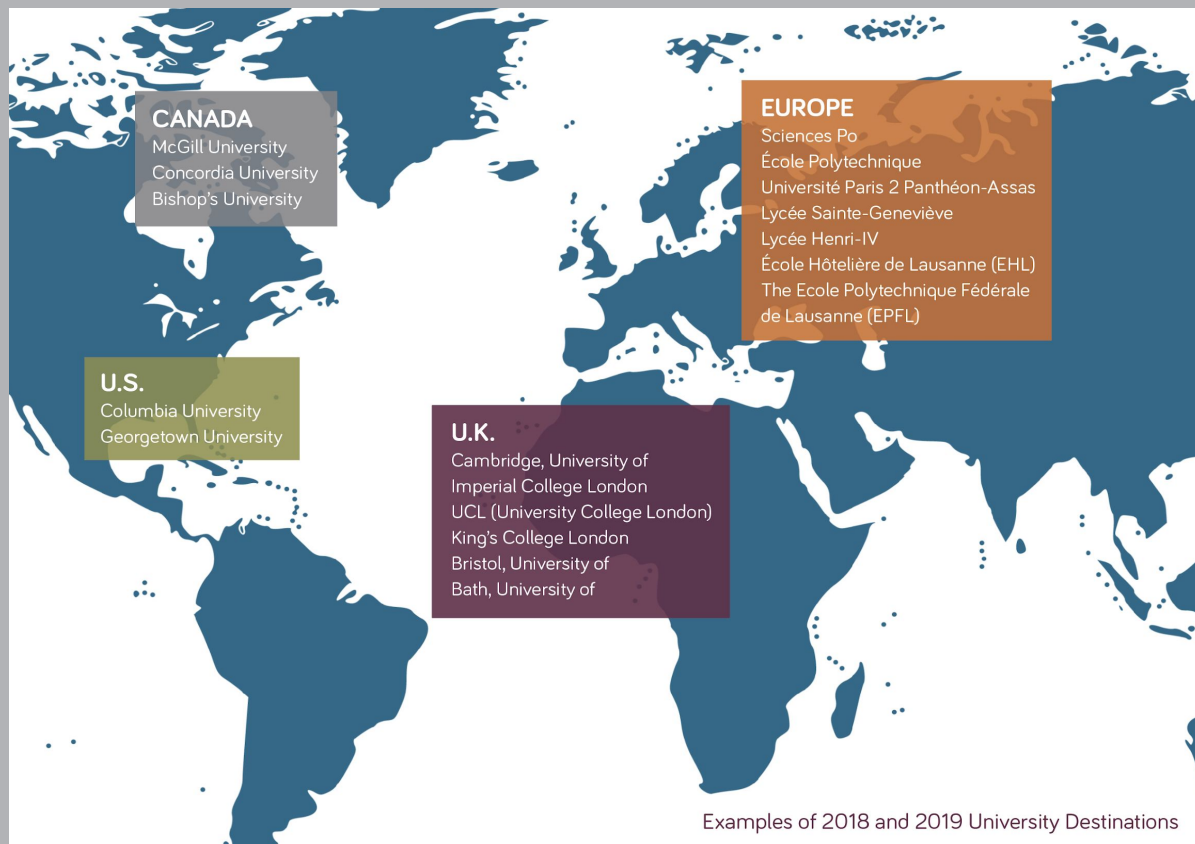
- 100% de réussite au Baccalauréat 85% avec mention (61% TB et B)
- 100% de réussite au Brevet des Collèges : 100% avec mention
- De très belles offres post bac: Cambridge, Imperial, UCL, King's College, LSE, Bristol, Warwick, Durham, Georgetown (USA), McGill (Canada), etc.
- Prépas françaises prestigieuses: Polytechnique, ateliers de Sèvres, Lycée Henri-IV, EDHEC Business School, Sciences Po, etc.





Class of 2019

OUR UNIVERSITY DESTINATIONS



DESTINATIONS 2019

64% of those going to the UK are attending Russell Group universities

49% of all students are going to the UK, **26%** to France, and **14%** to Canada

40% of those going to the UK are attending the World's Top 50 universities, and **20%** to the World's Top 10 institutions

20% of those going to France are attending Prépas

Subjects being studied include: Architecture, Biochemistry, Business Management, Civil and Environmental Engineering, Drama, English and French Law, History, Film, Finance, Graphic Design, Human Nutrition, Hospitality Management, HSPS, Mechanical Engineering, Medicine, Mathematics, Physics, PPE, Social Anthropology, Sport Psychology, Sustainable Development

OFFERS 2019

- ❑ **100%** of students who applied to Russell Group (RG) universities had at least one RG offer
- ❑ **100%** of students who applied to Canada received at least one Canadian university offer
- ❑ **92%** of students who applied to the UK had 3 or more offers (out of a maximum of 5)
- ❑ **76%** of students applied to UK institutions, **50%** to Parcoursup France, and **20%** to Prépas



Our Students Shine!

- **European Astro Pi Challenge:** two science experiments selected for the International Space Station
- **UNIS-UN Conference:** students represented UK in debate about global water crisis in NYC (USA)
- **Model United Nations conferences:** London and Paris
- **Défi scientifique:** Primary students to participate in European scientific challenges
- **Le César des lycéens:** exclusive screenings; student participation in voting process- London and Paris
- **Orchestre des Lycées Français du Monde AEFÉ:** students performed in Madrid & live at la Maison de Radio France in Paris
- **La Nuit des Idées with Institut Français:** Student participation
- **ECIS MathQuest (6ème et CM2 students):** international Maths competition in Istanbul
- **Exhibition of CM2 artwork & photography**
- **La Grande Lessive:** Primary Section outdoors arts exhibition
- **Winston Churchill v Charles De Gaulle Cup/ Rosslyn Park National Schools Rugby 7s**
- **Championnats de France UNSS/ Laser-run school series:** Paris & East Region Championship
- **Leon Paul Junior Series & British School Team Championships:** ASP fencing events in London
- **Tetrathlon Open Training Days:** Fencing, swimming and laser-run





In their own words...





Any questions?

Contact admissions@lyceeinternational.london





Lycée International de Londres

WINSTON CHURCHILL

Additional slides



Ofsted: 'Outstanding' Sixth Form and Wellbeing

The school's work to promote pupils' personal development and welfare is outstanding

Outcomes for sixth-form students are excellent since the school was opened three and half years ago, students' progress has continued to rise

(Students) are prepared extremely well for the next stage of their careers

The behaviour of pupils is outstanding

Pupils' positive attitudes to learning are central to the school's work and its upbeat, stimulating ethos

Good teaching has a positive impact on pupils' learning, including the most able

Pupils, including those with Special Educational Needs and Disabilities (SEND), make strong progress ... this is the result of a well-designed curriculum and good teaching



Age 3 to 5 : Immersion bilingue simultanée Dual language immersion programme

- 2 enseignants en classe, 1 enseignant anglophone natif, 1 enseignant francophone natif - **2 teachers per class, 1 native speaker of each language**
- Deux langues qui se côtoient naturellement au sein de la classe - **Natural immersion into bilingualism in the classroom.**
- Des activités langagières ciblées - **Targeted language activities**
- Apprentissage via le jeu, les interactions sociales et activités - **Learning through play, social interactions and activities**



"Children only fully understand what they themselves have created" - J. Piaget



Age 5 to 10: L'ENTRÉE AU PRIMAIRE JOINING LIL IN PRIMARY

- 9 classes (GS - CM2) - 10 classes in 2020/21 including Early Years
- 22 élèves en moyenne par classe / average of 22 students per class
- 50% français - 50% anglais / 50% English/ 50% French
- Un professeur Français et 1 professeur Anglais par classe / each class has 1 English teacher and 1 French teacher
- Accompagnement personnalisé, pédagogique et/ou émotionnel (avec notre social emotional counselor ou le learning specialist) Personalised social/emotional or academic support (with our social emotional counselor or our learning specialist)
- ESL & FLE soutien en petits groupes / support in small groups
- Assemblée à thèmes / Themed assemblies





Age 5 to 10: Emploi du temps au Primaire Primary school timetable

PRIMAIRE - PRIMARY timetable (example)

	MONDAY	TUESDAY	WEDNESDAY	THURSDAY	FRIDAY
8:45	FRANÇAIS	ENGLISH	ENGLISH	FRANÇAIS	FRANÇAIS
9:50					
RECESS JARDIN					
10:10	FRANÇAIS	ENGLISH	ENGLISH	FRANÇAIS	FRANÇAIS
11:30					
LUNCH JARDIN					
12:45	ENGLISH	PE	FRANÇAIS	PE	ENGLISH
1:50					
COUR					
2:10	ENGLISH	FRANÇAIS	MUSIC	ENGLISH	ENGLISH
2:30					
3:15					
Enseignement en français/Teaching in French			Enseignement en anglais/Teaching in English		



L'entrée en 6è au LIL

Entering 6è at LIL

- 3 classes de 26-28 élèves + 1 classe EIP de 12 à 18 élèves
 - 3 groups of 26-28 students, 1 group of 12-18 for EIP
- Une journée d'accueil spécifique + journée d'intégration
 - A special induction day and team building outings
- Opening Minds classes obligatoires au Collège (calligraphie chinoise, atelier écriture créative, programmation, Initiation à l'épigraphie grecque, initiation au sanskrit, dance...)
- Accompagnement personnalisé, pédagogique et/ou émotionnel (avec nos social emotional counselor, learning specialist, ou chien thérapeute)
 - One to one support with our team of social emotional counsellors, learning specialists, including a Dogtor.





LIL ENGLISH INTERNATIONAL PROGRAMME

Y7-Y9 / 6e-4e Sept 2019

- For International students with an interest in French Language and Culture
- For French-speaking International families
- French immersion classes: PE
- Aligned on French curriculum
- Arts on rotation
- IB character : conceptual, inquiry-based learning, local/global context, strong focus on critical thinking.
- IGCSE: English Lang/Lit, Mathematics, French B

	COLLEGE				LYCEE				
	6e/Y7	5e/Y8	4e/Y9	3e/Y10	2nde/Y11	1e/Y12	Tle/Y13		
Disciplines/Subject							L	ES	S
Francais - Langue et litterature (FR)	4.5	4.5	4.5	4.5	5	4	2	0	0
Mathematiques (FR)	4.5	4	4	4	4		4	4	7
Histoire- Geographie-EMC (FR) / Pour les 2nde: Géo OIB (FR)	2	2	2	3.5	1		5.5	5.5	3
Sciences de la Vie et de la Terre (FR)			1.5	1.5	2				4
Physique-Chimie (FR)			1.5	1.5	3				5
EPS / PE (FR or ENG)	4	3	3	3	2	2	2	2	2
Economie								6	
Enseignement scientifique						2			
Philosophie							8	4	4
Visual Arts	1	1	1	1					
Music	1	1	1	1					
Langues Vivantes / Modern Lang.: All/Ger, Mandarin, Esp/Spa	3	3	3	3	3	3	3	3	3
English (Langue & Litterature ou EAL)	5	5	5	5	5	5	5	5	5
Histoire / Humanities (ENG)	1	1	1		2				
SES / Economics (ENG)					2				
Biology (ENG)									
STEM - Science, Technology, Engineering, Maths (ENG)	3	3	1	1.5					
LELE (1è +Tle L) / HG OIB (1è +Tle S)							2		2
Seconde/Year 11 (1 Option au choix) :									
Creation, innovation and Technology/STEAM (ENG)					1.5				
Methodes et Pratiques Scientifiques, Maths (FR)					1.5				
Methodes et Pratiques Scientifiques, SPC (FR)					1.5				
Theatre					1.5				
ICT/coding (ENG)					1.5				
Arts					1.5				
Cinema					1.5				
Performing Arts music					1.5				
Principes fondamentaux de l'économie et de la gestion					1.5				
Enseignement de spécialité (3 for 1è + 1 for Tle)						4	3	1.5	2
facultative options and student's support									
Langues et Cultures Antiques Latin ou Grec ou théâtre (lycée) ou Arts (lycée)		1	2	2	2	2	2	2	2
Discovery Classes (FR or ENG) - Min 2/week/sudent in lower secondary / TPE 1è	2	2	2	1					
6e: Etude dirigée / Supervised Homework - 2nde: Aide indiv. (FR or ENG) / EPI (cycle 4)		2	2	2	2	2	2	2	2
Vie de Classe et Assemblées / Homeroom and Assemblies	1	1	1	1	1	1	1	1	1
Total Maximum of hours per week	31	33.5	32.5	32.5	35.5	25	39.5	36	42



SAMPLE TIMETABLE Year 7/6e EIP

	Monday	Tuesday	Wednesday	Thursday	Friday
8h30	French Acq	Maths	Humanities	Maths	PE
9h20	French Acq	Maths	Humanities	Maths	PE
Break	Break	Break	Break	Break	Break
10h30	PE	French Acq	Steam	Arts	French Acq
11h20	PE	Library	Steam	Arts	French Acq
12h05	Break	Break	Break	Break	Break
12h25	Break	Break	Break	Break	Break
13h15	English	Steam	English	English	Maths
14h05	English	Steam	PSHE / Homeroom	English	Humanities
15h05-15h55	(Language) Discovery	Service Learning	(Language) Discovery	(Language) Discovery	Steam



EMPLOI DU TEMPS TYPE EN 6e

6e TIMETABLE

LYCÉE INTERNATIONAL DE LONDRES WINSTON CHURCHILL / Secondaire

EDT ELEVE CLASSE DE 6EME

	lundi	mardi	mercredi	jeudi	vendredi
8h30	ENGLISH HIPKINS <i>L2 green</i>	ESPAGNOL BENEYTO <i>L2 green</i>	HISTOIRE/GEO SEVERIN <i>L3 orange</i>	MUSIQUE LOSARDO <i>A6 Green music</i>	SPORT SAUDO <i>MUGA</i>
9h20					
10h10	SPORT SAUDO <i>SCENE</i>	MATHS SAHORES <i>A2 Green</i>	STEAM PARVEEN-RAFIQ <i>A8 Green steam</i>	ESPAGNOL BENEYTO <i>L7 orange</i>	ENGLISH HIPKINS <i>L4 green</i>
10h30					
11h20					
12h05					
12h25				MATHS SAHORES <i>A4 Green</i>	
13h15	LETTRES TAUVERON <i>L9 green</i>	LETTRES TAUVERON <i>L3 green</i>	ENGLISH HIPKINS <i>L4 green</i>		STEAM PARVEEN-RAFIQ <i>A8 Green steam</i>
14h05			HUMANITIES MALEWSKI <i>L5 orange</i>	LETTRES TAUVERON <i>L4 orange</i>	
15h05	LIBRARY LOCKWOOD	DISCOVERY CLASS BOROWSKY COUNCIL CHAMBER	ETUDES ETUDES	DISCOVERY CLASS WOOLLIAMS <i>L3 green</i>	F.L.E (Français Langue Etrangère) YHUEL <i>L3 orange</i>
15h55					
16h45		F.L.E (Français Langue Etrangère) YHUEL <i>L3 orange</i>			
17h35					



Progressive and monitored use of Technology - June 2017

GS - CE2 / Year 1 - 4	Very limited use of the iPad under strict supervision of the teacher, no internet access, only offline apps
CM1 - CM2 / Year 5 - 6	Limited use of the iPad under teacher supervision, controlled internet access, only offline apps
6e - 5e / Year 7 - 8	Individual iPads with limited and controlled internet and youtube access, no app store
4e - Terminale / year 9 - 13	Broader but filtered use of ipads including app store

- Classroom software monitors use of iPads in class
- Use of Sophos, a very powerful school filter
- Games and Snapchat are forbidden, they are removed from devices when found
(see *ICT Policy* and *Ipad Users agreement and Guidelines*)
- The IT department can at any time see the usgae activity on an individual iPad
- Restrictions have been imposed on 84 students (7 of which asked by parents)
- Common Sense Education Passeport, to educate on digital citizenship



UN LYCÉE FRANÇAIS ET INTERNATIONAL A FRENCH AND INTERNATIONAL SCHOOL

- Établissement homologué par le Ministère de l'Éducation Nationale Français, de la GS à la Terminale et Membre du Council of International Schools (CIS)
 - Accredited by the French Ministry of Education from Year 1 to 13
 - CIS member school
- Excellence française & environnement international, ouvert et créatif
 - French excellence in an international, open minded and creative environment
- Force et Avantages du bilinguisme
 - Strengths and advantages of bilingualism
- Enseignement de qualité, attentif à chaque élève
 - High standards in teaching, focused on each student
- Maintenant deux cursus au choix
 - Now two academic programmes

